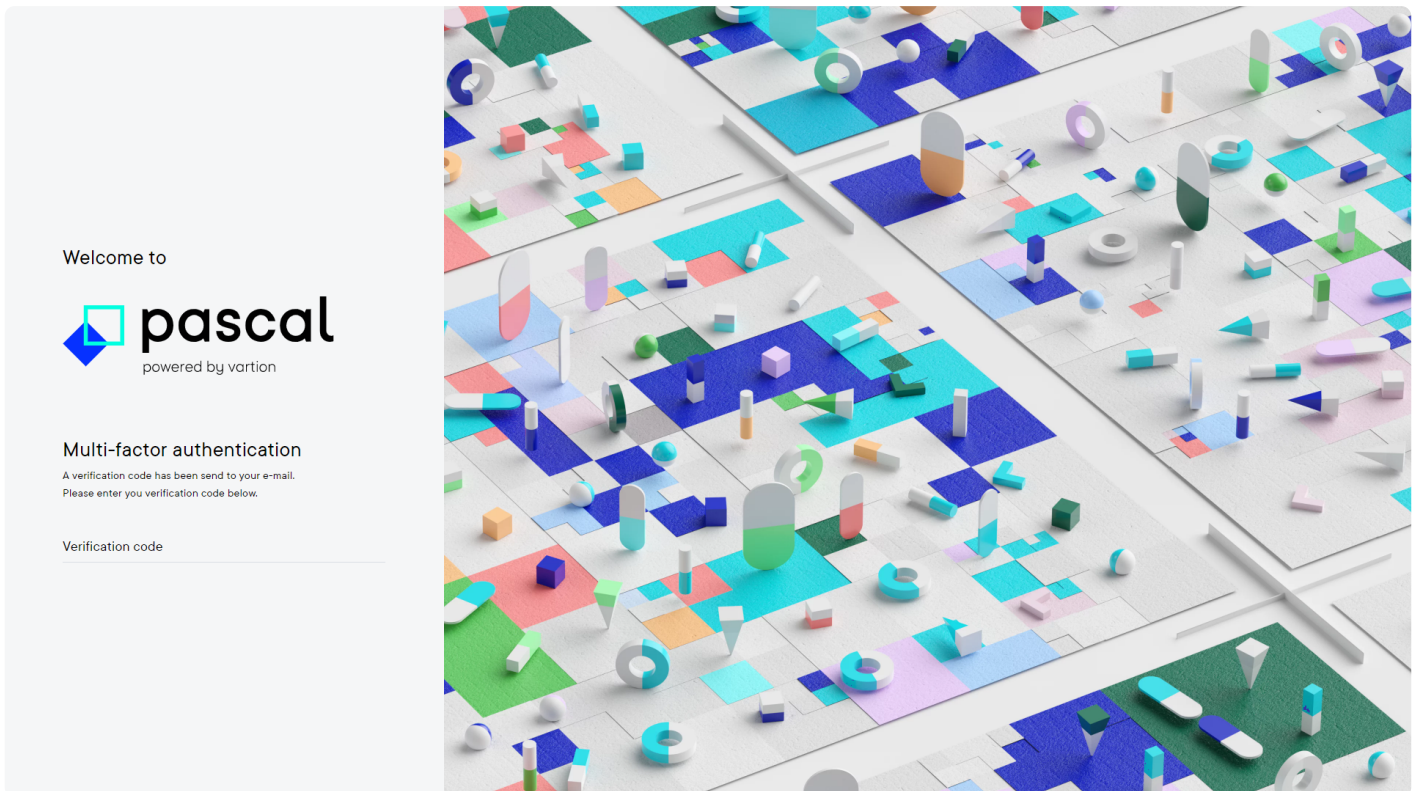


4.13 Multi-Factor Authentication

Multi-factor authentication can now be turned on in the configuration settings by all users. When this feature is turned on, a verification code will need to be filled in when trying to log in using an email address and password. The verification code will be send to the email address connected to the Pascal account. The verification code in the email can be used once. The next time a verification code is needed, a new email with a new verification code will be send to the connected email address.

If 'Sign in with Microsoft' is used, the multi-factor authentication verification code will not be asked for.



Multi-factor authentication can also be turned on for the whole organisation in the policies. By turning this setting on, all users in the Pascal platform will have to fill in the multi-factor authentication verification code when logging in. The multi-factor authentication verification code will only be asked once a month on IP addresses used with Pascal before and every time logging in from a new IP address.

Revision #2

Created 5 February 2024 12:43:20 by Sanne Janssen

Updated 28 January 2025 11:03:59 by Sanne Janssen